



CARING FRIENDS

W I N T E R 2 0 2 1 N E W S L E T T E R

Ryder-Cheshire Victorian Homes Foundation Inc.
ABN 94 074 894 677

10-14 Donaldson Street Ivanhoe Vic 3079
Tel: (03) 9254 2400, Fax: (03) 9254 2499
www.rydercheshirehomes.org.au

GREETINGS FROM OUR PRESIDENT

With winter now upon us and the colder weather setting in, we need once more to be vigilant protecting our health and well-being and safety of others. It seems COVID-19 is again present to easily spread within the community. Staff at the Homes have continued to follow Victorian Government COVID-19 guidelines during the year, including wearing masks and completing appropriate hand hygiene, while our cleaners have maintained their efforts keeping the premises safe and clean.

Office News

Unfortunately, due to health reasons our Manager Nicky Robinson gave notice in March. Nicky gave more than 100% to her role. Her commitment to the Homes was extraordinary and we thank her for this. We are also very grateful to Assistant Manager Leila, for taking on the Manager responsibilities ably assisted by Resident Carer Nick Dodd.

Shortly after Nicky's departure Resident Carer Anne Chan left. We thank Anne for her work in the office; the introduction of the monthly music group and for the lovely Christmas Dinners she prepared for residents who were unable to return to their family for Christmas. Anne takes with her our best wishes.

In April we announced the Manager vacancy had been filled. We are confident our new Manager Sandra Gillespie will bring her own skills and talents to the role.

En-suite Renovations and more...

Our renovations are still ongoing for various reasons. Gyngel House, Building 14 is now expected to be completed early August, delayed due to additional work being required to conform to fire regulations, late delivery of materials and the extension of the contract to include an update of the laundries. The new kitchen cabinetry is partly installed in each room. In addition, new white goods, fridges stoves and range hoods have been purchased but not yet fully installed. All rooms will be repainted and have new bedroom furnishings. Once completed, residents will be able to enjoy the benefits of the newly refurbished accommodation. We are all looking forward to the completion of Building 14 to see the results of all the immense work and tireless effort of everyone involved.

Maintenance

Maintenance Manager Don continues to ensure the buildings and premises are kept in A1 condition. There have been many improvements to the exterior of the buildings while the interior refit has continued.



Resident Carer Update

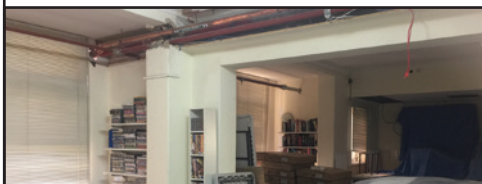
Joining our group of Resident Carers in February were Leila and her husband Iwan. Shortly after we also welcomed Talal Al-Aryan as a new student Resident Carer. Our other two Resident Carers Nick and Jaysmine have continued with their volunteer hours with Nick stepping up to temporarily fill the Assistant Manager role. We thank him for his contributions in the role which he has efficiently filled. Furthermore, Nick and Jaysmine have successfully graduated, completing their respective Master studies. Congratulations to them both!

Donations

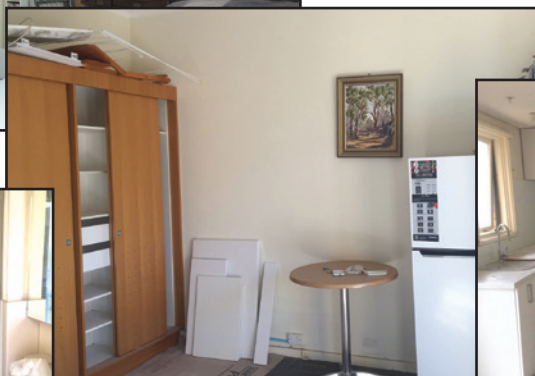
Our Caring Friends Newsletter continues to generate donations from readers, past residents and supporters, both individuals and groups. We value every donation and sincerely thank each and every donor.

Ryder-Cheshire Australia (RCA) Biennial Conference

The Conference held every second year (postponed 2020 due to COVID-19) was hosted by the Mount Gambier Home on 15 May. Ivanhoe Homes representatives were in attendance via Zoom at the new Ivanhoe library. Also, in attendance via Zoom from England was Elizabeth Cheshire the daughter of Leonard and Sue. The conference focussed on a change of constitution and the future structure of RCA.



▲ Community Room - part of WIP



▲ Prototype room - WIP
▲ En-suite shower



▼ Prototype Kitchen

PRESIDENT'S REPORT CONTINUED

Volunteers

Unfortunately, we were not able to host the Volunteers Luncheon this year, but you have not been forgotten. We wish all our volunteers well and look forward to seeing you sometime in the coming 12 months.

Our Committee of Management has been involved in overseeing the continued smooth operation of the Homes during the year. The building, Wifi and finance sub-committees have all been focussed on the progress and pace of renovations, keeping an eye on proposed building upgrade changes and their implementation as well as expenditure. I thank all the Committee for their continued support, assistance and attendance at meetings which are still conducted via Zoom.

Stay safe and warm over the coming months.

Peter Overton

OUR NEW MANAGER SANDRA GILLESPIE



I am originally from Stirling, Scotland but moved to England where I completed my BA Hons degree at Leeds Metropolitan University. I moved to Melbourne

with Hilton Hotels to open the Hilton at Melbourne Airport in 2001. I met my husband shortly after arriving in Australia and we have lived in Ivanhoe for the past 6 years. Ivanhoe is a great place to raise a family and I have an 8-year-old son who attends Ivanhoe Primary. We enjoy living close to the parklands where we can walk our dog or go for bike rides, before heading to one of the many local cafés.

I am thrilled to undertake the Manager role and have been welcomed by everyone who works and volunteers at Ryder-Cheshire. I look forward to being part of the Management team and ensuring the amazing work is continued.



MANAGEMENT TEAM REPORT

We hope that the past few months have found you all doing well. A new year can bring some uncertainty with it, but it can also be a very exciting time. Here at Ryder-Cheshire Homes there have been a whirlwind of changes. Sadly, not all of it was good. Our manager, Nicky, resigned from her position in March for health reasons. While her tenure with us was short, her impact will be felt for quite some time. In her time here, Nicky was deeply involved in most aspects of running the facilities. Residents could find her in the office ready to assist with whatever might be troubling them. Always ready to lend an ear to those who might need it, her presence was of great comfort to everyone and she will be dearly missed. We wish Nicky and her family all the best in the future.

Following Nicky's departure, Leila and Iwan accepted the volunteer role of Resident Carers. Their arrival coincided with Resident Carer Anne Chan's departure. Anne was a major contributor to our monthly music nights, prior to COVID-19. Once a month we invited local musicians to play a few sets for our residents. This entertainment was well received and we hope to be able to bring it back in time. We extend our gratitude to Anne for all her contributions to the Homes and wish her well in her future endeavours. Not long after, we welcomed new student Resident Carer Talal who comes from an engineering background and will be studying nursing while volunteering at the homes. The final personnel change was welcoming Sandra Gillespie to the Homes as our new Manager. Sandra brings a wealth of experience to the Homes and we are thrilled to have her aboard.



▲ Leila



▲ Nick

Renovations continue unabated. We have recently seen the installation of new induction stoves and range hoods into the rooms of Building 14. Additionally, we have delivery of new full-size refrigerators, replacing the previous smaller fridges. The en-suites were completed last year, with the shower areas being reworked entirely. Our crew of painters have repaired and painted external windows for Buildings 12 and 14 as well as painting gutters, downpipes and soffits.

Our beautiful gardens have, unfortunately, taken a hit during the external painting works. Due to heavy machinery needing to manoeuvre around the grounds, quite a few areas had to be pruned or removed entirely to get them out of the way. However, this has provided a golden opportunity to reinvigorate the grounds with new gardening plans in the future.

We are happy to report both Nick and Jaysmine have completed their coursework in their respective fields. Nick received his degree Master of Health Information Management and Jaysmine received her degree Master of Business Information Systems. Both look forward to staying on in Australia to work in their respective fields.

Until then, they are both patiently going through the after-study visa process, which can take quite some time to complete.

Our cleaning team have been absolute legends. With the difficulties we have faced over the past year, they have managed to keep on top of all our needs. Not only have the rooms continued to be kept in the best of condition, they have also ensured that the

grounds and pathways are kept tidy. Their tireless work has been invaluable to the Homes.

We are happy to say that we are slowly inviting back our local volunteers. Terry is the first to come back on board and help in the office a few hours each week. We hope to extend that to our other volunteers in due time. We look forward to being able to reintroduce our great band of volunteers to the Homes again.

From our team here at Ryder-Cheshire, we hope you all find enjoyment in the winter months and welcome you on any return visit.

Management Team – Leila & Nick

Autumn garden ▶



◀ Building 12 before painting
▲ Building 12 after painting

A BIG THANK YOU TO NICKY

It was a real blow when Nicky Robinson, our much-loved Manager, resigned earlier this year due to health reasons. We are truly grateful to Nicky for all her wonderful contributions to management and development of the Homes.

Nicky joined the Homes as Assistant Manager in March 2018. She came with a very impressive record in administration and project management in organisations such as Austin Health and the University of Melbourne. Nicky 'hit the ground running' at the Homes and was soon making significant contributions not only in administration, but also to the caring atmosphere of the Homes. Nicky always had time to listen, to share and to help. Nothing was a bother or too much trouble. Nicky always had a ready smile and a helping hand for everyone.

When Angie resigned in April 2020, Nicky accepted the role of Manager. As always Nicky rose to the challenge, guiding the Homes through the worst of the pandemic changes and lockdowns, managing to staff the rosters without volunteers, and keeping up the morale of staff and residents alike. All

this was set against the constant background of the major renovations of Building 14, which had started just as the pandemic unfolded. Nicky cared for everyone at the Homes, and she took particular care of and pride in our post grad student Resident Carers, who became like members of her extended family.

Nicky was also a member of the Homes' Committee of Management, where she made very valuable contributions across a range of issues. Her previous experience and contacts with philanthropic organisations were very helpful in finding additional support for parts of the renovation project, and she could be relied on for innovative ideas and solutions for many other issues under discussion. Nicky's dual role as Manager and as a committee member, helped to streamline communication and efficiency within the Homes.

Nicky has made a huge contribution to the Homes over a few short years. We miss her energy, her special people skills and her infectious sense of fun. I am sure that you all join in sending our collective thanks, love and best wishes to Nicky.

Kathleen Oswin

HII! FROM TALAL- NEW STUDENT RESIDENT CARER

I've recently moved back home to Melbourne from Darwin, to join Ryder-Cheshire Victorian Homes in Ivanhoe. I spent time in sunny tropical Darwin working as an engineer for 2 years. It was a fantastic opportunity to experience the bigness and diversity of Australia - in its culture, people, and land. Whilst in Darwin, I decided to change careers and work in an industry that better aligned with my values, so I enrolled in a Master of Nursing at the University of Melbourne. I came across Ryder-Cheshire Victorian Homes online, by chance, when I was planning my move back to Melbourne. I admired their valuable and inclusive mission and ongoing dedication to relieving suffering. I am very grateful for the chance they have given me to reside in the Homes and volunteer my time supporting the people that stay here. I look forward to seeing you around the Homes when you come to stay.



THANK YOU... TO THE SUNRAYSIA CANCER SUPPORT GROUP INC

Ryder-Cheshire over the years has received many generous donations from the Sunraysia Cancer Support Group (SCSG). This ongoing support has always been greatly valued.

SCSG Inc has worked tirelessly for 41 years to support local hospitals and the community in cancer support activities. However, according to their recent press release titled "End of an Era" they voted to wind down the Group during a special luncheon occasion on 19 April. The occasion was also to honour and acknowledge the passing of long-term Secretary/Treasurer Jan Innes, who was secretary for 30 years.

Established in 1980 in the early days of support groups, SCSG provided local support to families by way of meals, home visits and moral support. The Group then branched out into fundraising, to raise funds for necessary equipment required at local hospitals, as well as donations of up to \$10,000 to the Mildura Base, Robinvale and Wentworth District hospitals and Chaffey Aged Care. In addition, cancer patients in the community benefitted with one off welfare payments to relieve financial pressure. SCSG also assisted paying for flights for people who needed to travel to Melbourne or Adelaide for treatment. Fund raising activities included fashion parades, street stalls, raffles and so forth but their biggest earner for 30 years was the annual Mother's Day Flower Stall in Dareton.

Receiving a Grant from Cancer Australia led to the setting up of a cancer information shop called Sunraysia Cancer Resources, now a well-respected service, accessible to people living with cancer and their families. Like Ryder-Cheshire, Sunraysia Cancer Resources do not receive any government grants or recurrent funding and rely on donations and fundraising.

In 2018 SCSG handed over the financial responsibility and governance to Sunraysia Cancer Resources.

Members nevertheless continued to meet on a social support group basis up to the recent memorable "End of an Era" luncheon.

From: Press Release END OF AN ERA by Jenny Gledhill

We thank Jenny Gledhill and all members for their wonderful contributions of which Ryder-Cheshire Homes was a recipient. We extend that appreciation to all country support groups including the Coomealla Memorial Sporting Club who also give generously to the Homes.



Sunraysia Cancer Support Group Inc – group photo

Rear LR - Mary, Margaret, Phyllis, Jenny, Josie.

Front - June, Verna & Maureen

SNIPPETS

Some recent resident notes of appreciation.

“Ryder-Cheshire Homes go out of their way to make sure your stay is terrific, thank you.”

“A credit to staff and volunteers who run this facility.”

“Thank you for providing such a crucial service to isolated rural people, my parents would not have survived these trips without Ryder-Cheshire accommodation and support.”

“Thank you to the Ryder-Cheshire Team. Having your safe and homely accommodation while I was having treatment over these past few weeks has been most appreciated, without these units it would be very hard for country people.”

“Thank you for your help during my stay and the lovely accommodation.”

Eaglehawk Dispensary 1920 & Oriental Hotel 1861
New Victoria Hotel & High Street



AROUND & ABOUT EAGLEHAWK

As COVID-19 restrictions became more relaxed the opportunity to travel around Victoria and beyond also became possible. Many residents of the Homes come from Eaglehawk, a suburb of the City of Greater Bendigo and with its rich gold mining history a place of interest and one to explore.

It all began in 1852 when one Joseph Crook found a gold nugget while searching for stray horses and started the Eaglehawk goldrush. Local myth has it that Crook noticed an eaglehawk flying near his claim and named it accordingly. The newly established Eaglehawk township quickly grew to 40,000 inhabitants and became the Borough of Eaglehawk in 1862. By 1893 the alluvial gold was exhausted, reef mines were established with 300 tonnes of gold extracted but most of these too had closed by the end of the 1890's. Grand buildings and homes remain from the era and the post gold rush period when industry moved away from mining.

Eaglehawk State School ▶



◀ Canterbury Gardens



Town Hall ▲
War Memorial & Mechanics Institute



▲ Court House Museum
◀ Log Lock-up
▼ Presbyterian Church



The civic centre of old Eaglehawk is Brassey Square located at the intersection of High Street, Sailors Gully Road and Peg Leg Road. Situated on the square is the impressive town hall built in 1901, now the Star Cinema; the Mechanics Institute 1883 and Eaglehawk Courthouse Museum 1869. Next to the courthouse is a well-preserved old Log Lock-up built in 1855. Up until 1892 a steam tramway service terminated at the square which was replaced by electric trams up until 1972. Across the road are the Canterbury Gardens set out 1863. During the March Dahlia and Arts Festival, it boasts up to 1500 different varieties of dahlia on show. The extended gardens now include Canterbury Park Oval, Lake Neangar and Lake Tom Thumb and several walking trails. Eaglehawk remained an independent borough up until 1994 while residents today continue to be proud of their gold mining past.

Teresa Daws

CARING FRIENDS NEWSLETTER BY EMAIL

Instead of receiving a hard copy, we can send it to you via email. Simply call our office and provide your email address, or go to www.rydercheshire.org.au and follow the links. Thank you.

REGULAR SOCIAL EVENTS SUSPENDED

Get-togethers for a chat over morning or afternoon tea, monthly art and craft group and musical entertainment have been suspended. Please look out for notifications from our front office when these are expected to resume.

DONATION

Ryder-Cheshire Ivanhoe Homes (ABN 94 074 894 677) receives no government funding and is financed entirely through its own efforts and the generous support of Caring Friends.

Donations of \$2.00 and over are tax deductible

Visit www.rydercheshirehomes.org.au to donate via **PayPal**

If you would like to make a donation, please fill in the form and send it to the address below:

RCVHF Inc. 10-14 Donaldson Street
IVANHOE VIC 3079

Amount \$ _____

Name: _____

Address: _____